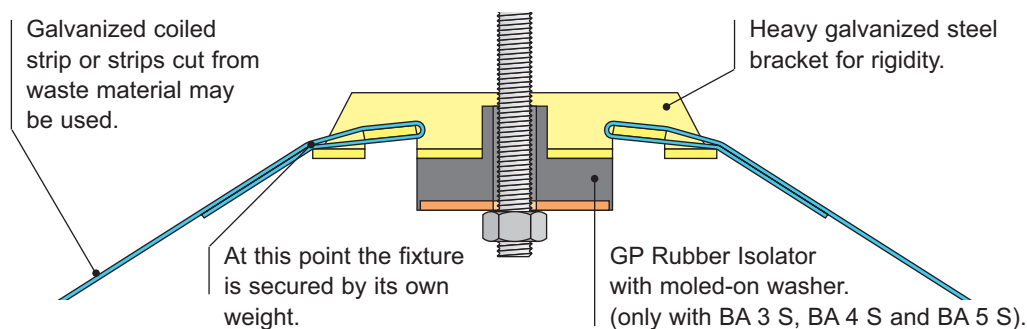




- For the suspension of circular ductwork (Ø 71 up to 3000 mm)
- A simple galvanized steel strip encircles the duct.
- A press-formed steel bracket joins the two ends of the steel strip and provides a suspension point for a threaded rod.
- The steel strip is hand-formed into the bracket, requires no tools and is self-locking.
- High load-bearing capacity.
- Isolated version also available.

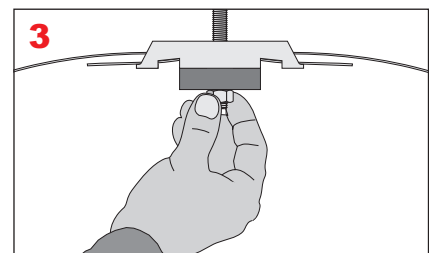
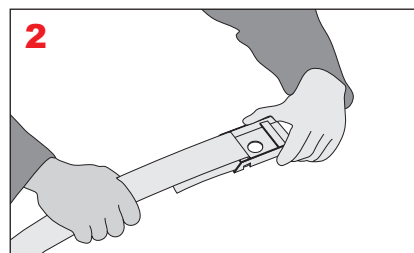
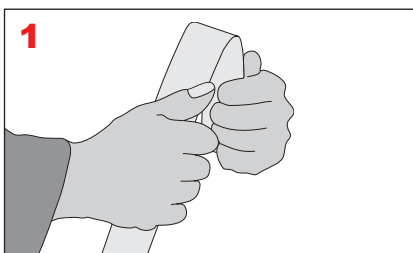


## INSTALLATION

Both ends of the strip are bent over 8 to 10 cm. Protect your hands with gloves!

Hook the ends through the slots in the bracket.

Suspend the assembly from a drop-rod or a ceiling fixing.



## DESIGNATION AND FIELD OF APPLICATION

Art.No	Description	Threaded rod	Loading capacity*	Strip dimensions
F09A-1001	BA 3	M8	1000 N	30 x 0,75 up to 1,0 mm
F09A-1002	BA 4	M8	1300 N	40 x 0,88 up to 1,2 mm
F09A-1003	BA 5	M10	1600 N	50 x 1,00 up to 1,5 mm
F09V-1004	BA 3 S	M8	300 N	30 x 0,75 up to 1,0 mm
F09V-1005	BA 4 S	M10	500 N	40 x 0,88 up to 1,2 mm
F09V-1006	BA 5 S	M12	700 N	50 x 1,00 up to 1,5 mm
F09A-1101	Suspension Strip 30 x 0,75 m galv.	--	--	--
F09A-1102	Suspension Strip 40 x 0,88 m galv.	--	--	--
F09A-1103	Suspension Strip 50 x 1,00 m galv.	--	--	--



\* The indicated maximum load-bearing capacity is in accordance with the European Norm EN 12236 and can therefore be used integrally. The breaking load is three times higher.

More information concerning the GP Rubber Isolators can be found in the section „GP Rubber Isolator/GR Rubber Ring“.