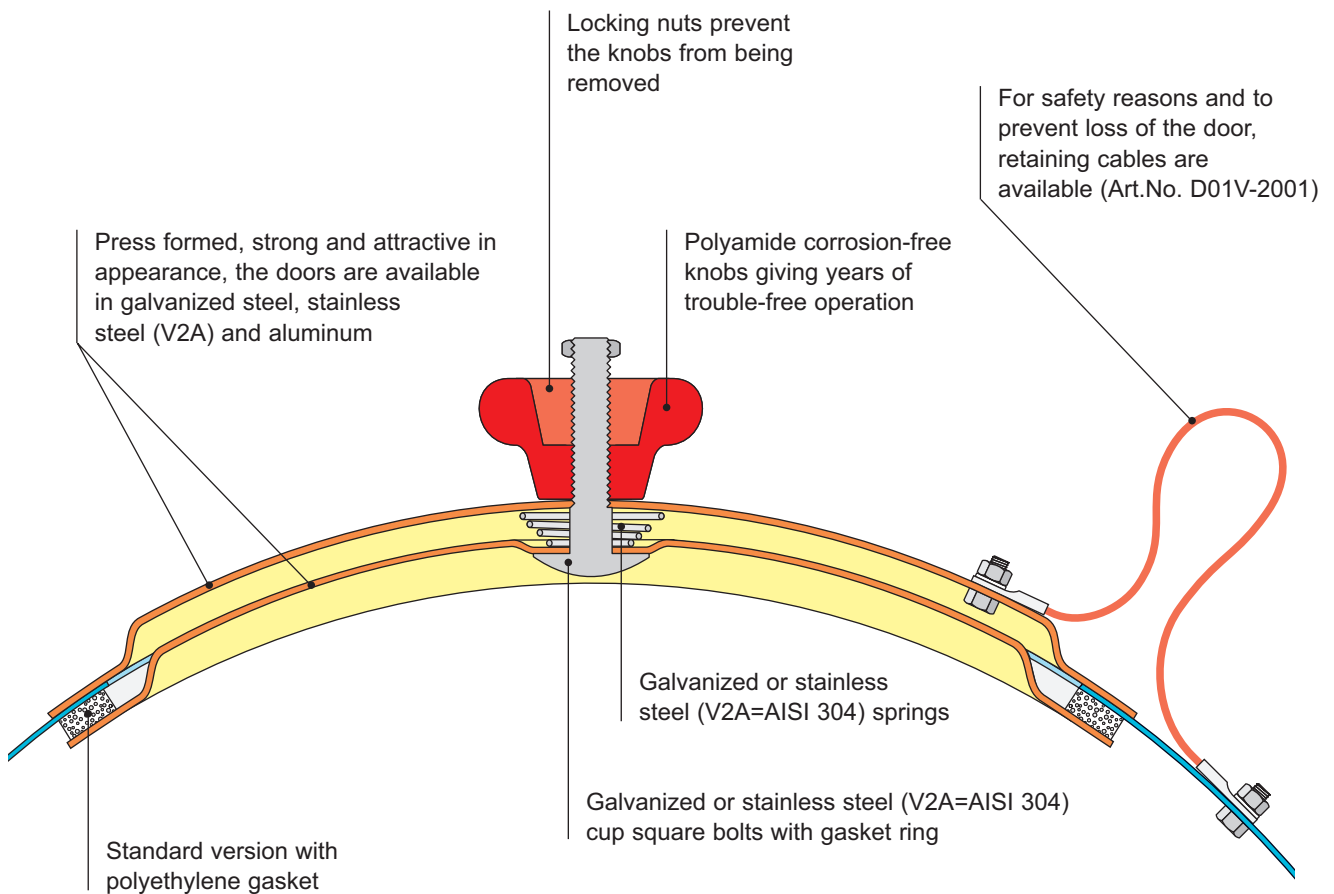


- **Access doors for circular and oval ducts.**
- **Easy and rapid installation.**
- **The thin and sometimes wavy duct wall is clamped between two stable covers.**
- **Two knobs allow the easy handling of the doors.**
- **Available in several sizes and various versions.**

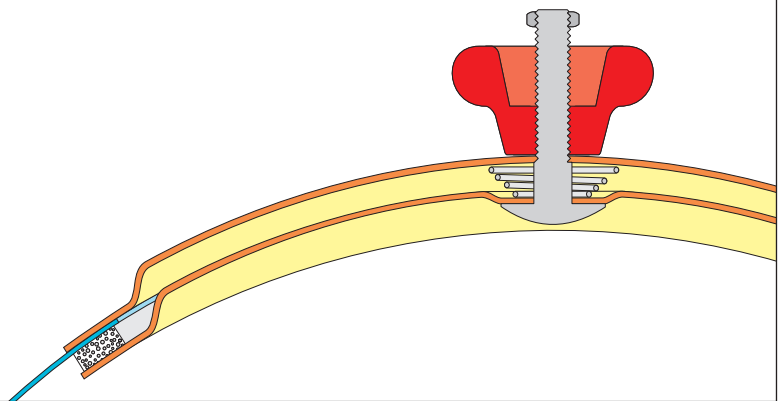


RRD VERSIONS

Standard version:

RRD Access Door with polyethylene (PE) gasket and polyamid knobs

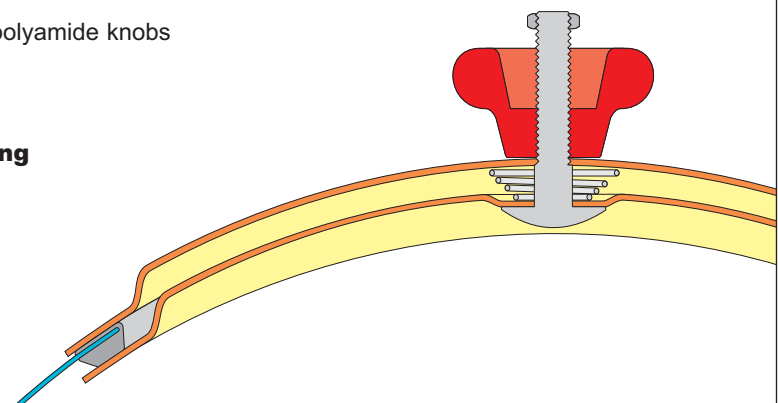
Operating temperature from -70°C (-94°F) to $+70^{\circ}\text{C}$ ($+158^{\circ}\text{F}$)
Resistant against grease and oils.



With self-adhesive rubber edge molding and polyamide knobs version:

RRD Access Door with SKK with self-adhesive rubber edge molding and polyamid knobs

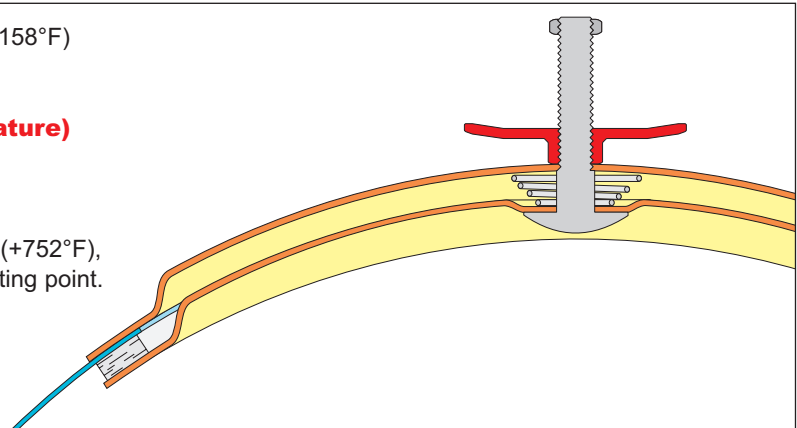
Operating temperature from -70°C (-94°F) to $+100^{\circ}\text{C}$ ($+212^{\circ}\text{F}$)



For operating temperatures above $+70^{\circ}\text{C}$ ($+158^{\circ}\text{F}$) version:

RRD Access Door HT (High Temperature) with ceramic wool gasket and steel knobs

Resists temperatures up to approx. $+400^{\circ}\text{C}$ ($+752^{\circ}\text{F}$), temperature corresponding to the zinc's melting point.



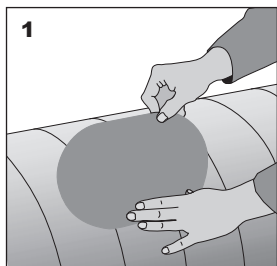
All the above mentioned versions are available in galvanized steel, stainless steel (V2A=AISI 304) and aluminum.

In case of higher requirements regarding the resistance to abrasion (pneumatic transport for instance) or for improved aerodynamic properties, we also offer access doors with a 3rd plate which is welded in the inside panel of the door. Since this 3rd plate also serves insulation purposes, this access door is described as IRRD-3PL under IRRD Insulated Circular Access Doors.

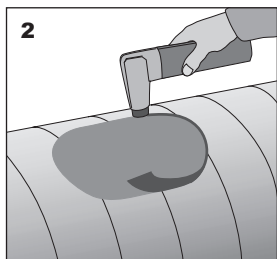


- More information about the rubber edge molding (SKK) can be found in the „Additional Information no. 6“.
- More information about our gaskets can be found in the „Additional Information no. 9 (PE) and no. 12 (KF)“.
- Information about the access doors water-tightness can be found in the „Additional Information no. 24“.
- Detailed information about the polyamide knobs can be found in the „Additional Information no. 8“.
- Fire resistance test results can be found in the „Additional Information no. 29“.
- All imperial units are approximations!

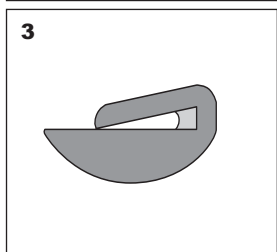
RRD INSTALLATION



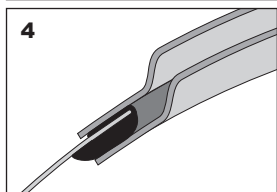
1 Apply the self-adhesive template on the duct wall at the desired position.



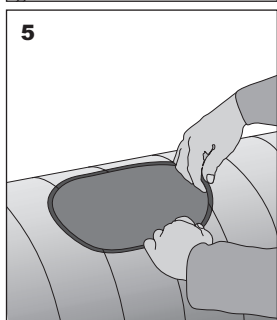
2 Cut the opening following the edge of the template.



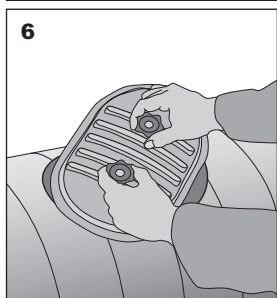
Only for access doors ordered with SKK rubber edge molding:
The SKK molding is fitted with injected glue. It can be applied on duct walls up to 2 mm thickness (Gage 14).



Only for access doors ordered with SKK rubber edge molding:
The thicker lip of the SKK must be inside the duct.



Only for access doors ordered with SKK rubber edge molding:
Apply the SKK molding so that the duct wall enters as deeply as possible in the pocket. Both ends should meet at a straight section, pressing slightly against each other but without overlapping.



Install the door: turn the knobs till they hit the stops and insert the inner door panel inside the opening at an angle. Then straighten the door, pull it lightly to center it and tighten the knobs.

DUCT DIAMETERS:

RRD Access Doors for larger diameters than the ones listed are available upon request.



Template dimensions are available in the document „Additional Information no. 26“.



Knob torque figures are available in the document „Additional Information no. 20“.

AIR-TIGHTNESS:

Correctly installed RD Access Doors are air-tight up to at least + 5000 Pa and at least - 5000 Pa (500 mm w.g. or approx. 20 in w.g.)

ORDER RANGE

(RRD access doors for larger duct Ø available upon request)

RRD Access Doors (Standard versions)									
Art.No.	Description	for duct-Ø in mm			Art.No.	Description	for duct-Ø in mm		
		min.	Standard	max.			min.	Standard	max.
180 x 80 mm (7 x 3 in)					400 x 300 mm (16 x 12 in)				
D03A-1001	RRD 18- 7 galv	68	71	75	D03A-1020	RRD 43-40 galv	370	400	420
D03A-1002	RRD 18- 8 galv	76	80	85	D03A-1021	RRD 43-45 galv	421	450	470
D03A-1003	RRD 18- 9 galv	86	90	95	D03A-1022	RRD 43-50 galv	471	500	530
D03A-1004	RRD 18-10 galv	96	100	105	D03A-1023	RRD 43-56 galv	531	560	600
D03A-1005	RRD 18-11 galv	106	112	120	D03A-1024	RRD 43-63 galv	601	630	670
D03A-1006	RRD 18-12 galv	121	125	130	D03A-1025	RRD 43-71 galv	671	710	750
D03A-1007	RRD 18-14 galv	131	140	150	D03A-1026	RRD 43-80 galv	751	800	850
D03A-1008	RRD 18-16 galv	151	160	170	D03A-1027	RRD 43-90 galv	851	900	950
D03B-1001	RRD 18- 7 V2A	68	71	75	D03B-1020	RRD 43-40 V2A	370	400	420
D03B-1002	RRD 18- 8 V2A	76	80	85	D03B-1021	RRD 43-45 V2A	421	450	470
D03B-1003	RRD 18- 9 V2A	86	90	95	D03B-1022	RRD 43-50 V2A	471	500	530
D03B-1004	RRD 18-10 V2A	96	100	105	D03B-1023	RRD 43-56 V2A	531	560	600
D03B-1005	RRD 18-11 V2A	106	112	120	D03B-1024	RRD 43-63 V2A	601	630	670
D03B-1006	RRD 18-12 V2A	121	125	130	D03B-1025	RRD 43-71 V2A	671	710	750
D03B-1007	RRD 18-14 V2A	131	140	150	D03B-1026	RRD 43-80 V2A	751	800	850
D03B-1008	RRD 18-16 V2A	151	160	170	D03B-1027	RRD 43-90 V2A	851	900	950
D03C-1001	RRD 18- 7 Alu	68	71	75	D03C-1020	RRD 43-40 Alu	370	400	420
D03C-1002	RRD 18- 8 Alu	76	80	85	D03C-1021	RRD 43-45 Alu	421	450	470
D03C-1003	RRD 18- 9 Alu	86	90	95	D03C-1022	RRD 43-50 Alu	471	500	530
D03C-1004	RRD 18-10 Alu	96	100	105	D03C-1023	RRD 43-56 Alu	531	560	600
D03C-1005	RRD 18-11 Alu	106	112	120	D03C-1024	RRD 43-63 Alu	601	630	670
D03C-1006	RRD 18-12 Alu	121	125	130	D03C-1025	RRD 43-71 Alu	671	710	750
D03C-1007	RRD 18-14 Alu	131	140	150	D03C-1026	RRD 43-80 Alu	751	800	850
D03C-1008	RRD 18-16 Alu	151	160	170	D03C-1027	RRD 43-90 Alu	851	900	950
200 x 100 mm (8 x 4 in)					500 x 400 mm (20 x 16 in)				
D03A-1009	RRD 21-14+15 galv	130	140/150	155	D03A-1028	RRD 54- 56 galv	520	560	600
D03A-1010	RRD 21-16+18 galv	156	160/180	190	D03A-1029	RRD 54- 63 galv	601	630	670
D03A-1011	RRD 21-20+22 galv	191	200/224	240	D03A-1030	RRD 54- 71 galv	671	710	750
D03A-1012	RRD 21-25+28 galv	241	250/280	300	D03A-1031	RRD 54- 80 galv	751	800	850
D03A-1013	RRD 21-31+35 galv	301	315/355	360	D03A-1032	RRD 54- 90 galv	851	900	950
D03B-1009	RRD 21-14+15 V2A	130	140/150	155	D03A-1033	RRD 54-100 galv	951	1000	1060
D03B-1010	RRD 21-16+18 V2A	156	160/180	190	D03A-1034	RRD 54-112 galv	1061	1120	1180
D03B-1011	RRD 21-20+22 V2A	191	200/224	240	D03A-1035	RRD 54-125 galv	1181	1250	1320
D03B-1012	RRD 21-25+28 V2A	241	250/280	300	D03A-1036	RRD 54-140 galv	1321	1400	1500
D03B-1013	RRD 21-31+35 V2A	301	315/355	360	D03A-1037	RRD 54-160 galv	1501	1600	1800
D03C-1009	RRD 21-14+15 Alu	130	140/150	155	D03B-1028	RRD 54- 56 V2A	520	560	600
D03C-1010	RRD 21-16+18 Alu	156	160/180	190	D03B-1029	RRD 54- 63 V2A	601	630	670
D03C-1011	RRD 21-20+22 Alu	191	200/224	240	D03B-1030	RRD 54- 71 V2A	671	710	750
D03C-1012	RRD 21-25+28 Alu	241	250/280	300	D03B-1031	RRD 54- 80 V2A	751	800	850
D03C-1013	RRD 21-31+35 Alu	301	315/355	360	D03B-1032	RRD 54- 90 V2A	851	900	950
300 x 200 mm (12 x 8 in)					D03B-1033 RRD 54-100 V2A 951 1000 1060				
D03A-1014	RRD 32-28 galv	260	280	300	D03B-1034	RRD 54-112 V2A	1061	1120	1180
D03A-1015	RRD 32-31 galv	301	315	340	D03B-1035	RRD 54-125 V2A	1181	1250	1320
D03A-1016	RRD 32-35 galv	341	355	380	D03B-1036	RRD 54-140 V2A	1321	1400	1500
D03A-1017	RRD 32-40 galv	381	400	420	D03B-1037	RRD 54-160 V2A	1501	1600	1800
D03A-1018	RRD 32-45 galv	421	450	470	D03C-1028	RRD 54- 56 Alu	520	560	600
D03A-1019	RRD 32-50 galv	471	500	530	D03C-1029	RRD 54- 63 Alu	601	630	670
D03B-1014	RRD 32-28 V2A	260	280	300	D03C-1030	RRD 54- 71 Alu	671	710	750
D03B-1015	RRD 32-31 V2A	301	315	340	D03C-1031	RRD 54- 80 Alu	751	800	850
D03B-1016	RRD 32-35 V2A	341	355	380	D03C-1032	RRD 54- 90 Alu	851	900	950
D03B-1017	RRD 32-40 V2A	381	400	420	D03C-1033	RRD 54-100 Alu	951	1000	1060
D03B-1018	RRD 32-45 V2A	421	450	470	D03C-1034	RRD 54-112 Alu	1061	1120	1180
D03B-1019	RRD 32-50 V2A	471	500	530	D03C-1035	RRD 54-125 Alu	1181	1250	1320
D03C-1014	RRD 32-28 Alu	260	280	300	D03C-1036	RRD 54-140 Alu	1321	1400	1500
D03C-1015	RRD 32-31 Alu	301	315	340	D03C-1037	RRD 54-160 Alu	1501	1600	1800
D03C-1016	RRD 32-35 Alu	341	355	380					
D03C-1017	RRD 32-40 Alu	381	400	420					
D03C-1018	RRD 32-45 Alu	421	450	470					
D03C-1019	RRD 32-50 Alu	471	500	530					
					CAUTION: V2A = stainless steel AISI 304.				
					The RRD access doors made of aluminum are fitted with V2A bolts, nuts and springs.				

ORDER RANGE

(RRD access doors for larger duct Ø available upon request)

RRD Access Doors with SKK (With SKK rubber edge molding)										
Art.No.	Description	for duct-Ø in mm			Art.No.	Description	for duct-Ø in mm			
		min.	Standard	max.			min.	Standard	max.	
180 x 80 mm (7 x 3 in)					400 x 300 mm (16 x 12 in)					
D03A-2001	RRD 18- 7 galv with SKK	68	71	75	D03A-2020	RRD 43-40 galv with SKK	370	400	420	
D03A-2002	RRD 18- 8 galv with SKK	76	80	85	D03A-2021	RRD 43-45 galv with SKK	421	450	470	
D03A-2003	RRD 18- 9 galv with SKK	86	90	95	D03A-2022	RRD 43-50 galv with SKK	471	500	530	
D03A-2004	RRD 18-10 galv with SKK	96	100	105	D03A-2023	RRD 43-56 galv with SKK	531	560	600	
D03A-2005	RRD 18-11 galv with SKK	106	112	120	D03A-2024	RRD 43-63 galv with SKK	601	630	670	
D03A-2006	RRD 18-12 galv with SKK	121	125	130	D03A-2025	RRD 43-71 galv with SKK	671	710	750	
D03A-2007	RRD 18-14 galv with SKK	131	140	150	D03A-2026	RRD 43-80 galv with SKK	751	800	850	
D03A-2008	RRD 18-16 galv with SKK	151	160	170	D03A-2027	RRD 43-90 galv with SKK	851	900	950	
D03B-2001	RRD 18- 7 V2A with SKK	68	71	75	D03B-2020	RRD 43-40 V2A with SKK	370	400	420	
D03B-2002	RRD 18- 8 V2A with SKK	76	80	85	D03B-2021	RRD 43-45 V2A with SKK	421	450	470	
D03B-2003	RRD 18- 9 V2A with SKK	86	90	95	D03B-2022	RRD 43-50 V2A with SKK	471	500	530	
D03B-2004	RRD 18-10 V2A with SKK	96	100	105	D03B-2023	RRD 43-56 V2A with SKK	531	560	600	
D03B-2005	RRD 18-11 V2A with SKK	106	112	120	D03B-2024	RRD 43-63 V2A with SKK	601	630	670	
D03B-2006	RRD 18-12 V2A with SKK	121	125	130	D03B-2025	RRD 43-71 V2A with SKK	671	710	750	
D03B-2007	RRD 18-14 V2A with SKK	131	140	150	D03B-2026	RRD 43-80 V2A with SKK	751	800	850	
D03B-2008	RRD 18-16 V2A with SKK	151	160	170	D03B-2027	RRD 43-90 V2A with SKK	851	900	950	
D03C-2001	RRD 18- 7 Alu with SKK	68	71	75	D03C-2020	RRD 43-40 Alu with SKK	370	400	420	
D03C-2002	RRD 18- 8 Alu with SKK	76	80	85	D03C-2021	RRD 43-45 Alu with SKK	421	450	470	
D03C-2003	RRD 18- 9 Alu with SKK	86	90	95	D03C-2022	RRD 43-50 Alu with SKK	471	500	530	
D03C-2004	RRD 18-10 Alu with SKK	96	100	105	D03C-2023	RRD 43-56 Alu with SKK	531	560	600	
D03C-2005	RRD 18-11 Alu with SKK	106	112	120	D03C-2024	RRD 43-63 Alu with SKK	601	630	670	
D03C-2006	RRD 18-12 Alu with SKK	121	125	130	D03C-2025	RRD 43-71 Alu with SKK	671	710	750	
D03C-2007	RRD 18-14 Alu with SKK	131	140	150	D03C-2026	RRD 43-80 Alu with SKK	751	800	850	
D03C-2008	RRD 18-16 Alu with SKK	151	160	170	D03C-2027	RRD 43-90 Alu with SKK	851	900	950	
200 x 100 mm (8 x 4 in)					500 x 400 mm (20 x 16 in)					
D03A-2009	RRD 21-14+15 galv with SKK	130	140/150	155	D03A-2028	RRD 54- 56 galv with SKK	520	560	600	
D03A-2010	RRD 21-16+18 galv with SKK	156	160/180	190	D03A-2029	RRD 54- 63 galv with SKK	601	630	670	
D03A-2011	RRD 21-20+22 galv with SKK	191	200/224	240	D03A-2030	RRD 54- 71 galv with SKK	671	710	750	
D03A-2012	RRD 21-25+28 galv with SKK	241	250/280	300	D03A-2031	RRD 54- 80 galv with SKK	751	800	850	
D03A-2013	RRD 21-31+35 galv with SKK	301	315/355	360	D03A-2032	RRD 54- 90 galv with SKK	851	900	950	
D03B-2009	RRD 21-14+15 V2A with SKK	130	140/150	155	D03A-2033	RRD 54-100 galv with SKK	951	1000	1060	
D03B-2010	RRD 21-16+18 V2A with SKK	156	160/180	190	D03A-2034	RRD 54-112 galv with SKK	1061	1120	1180	
D03B-2011	RRD 21-20+22 V2A with SKK	191	200/224	240	D03A-2035	RRD 54-125 galv with SKK	1181	1250	1320	
D03B-2012	RRD 21-25+28 V2A with SKK	241	250/280	300	D03A-2036	RRD 54-140 galv with SKK	1321	1400	1500	
D03B-2013	RRD 21-31+35 V2A with SKK	301	315/355	360	D03A-2037	RRD 54-160 galv with SKK	1501	1600	1800	
D03C-2009	RRD 21-14+15 Alu with SKK	130	140/150	155	D03B-2028	RRD 54- 56 V2A with SKK	520	560	600	
D03C-2010	RRD 21-16+18 Alu with SKK	156	160/180	190	D03B-2029	RRD 54- 63 V2A with SKK	601	630	670	
D03C-2011	RRD 21-20+22 Alu with SKK	191	200/224	240	D03B-2030	RRD 54- 71 V2A with SKK	671	710	750	
D03C-2012	RRD 21-25+28 Alu with SKK	241	250/280	300	D03B-2031	RRD 54- 80 V2A with SKK	751	800	850	
D03C-2013	RRD 21-31+35 Alu with SKK	301	315/355	360	D03B-2032	RRD 54- 90 V2A with SKK	851	900	950	
300 x 200 mm (12 x 8 in)					D03B-2033	RRD 54-100 V2A with SKK	951	1000	1060	
D03A-2014	RRD 32-28 galv with SKK	260	280	300	D03B-2034	RRD 54-112 V2A with SKK	1061	1120	1180	
D03A-2015	RRD 32-31 galv with SKK	301	315	340	D03B-2035	RRD 54-125 V2A with SKK	1181	1250	1320	
D03A-2016	RRD 32-35 galv with SKK	341	355	380	D03B-2036	RRD 54-140 V2A with SKK	1321	1400	1500	
D03A-2017	RRD 32-40 galv with SKK	381	400	420	D03B-2037	RRD 54-160 V2A with SKK	1501	1600	1800	
D03A-2018	RRD 32-45 galv with SKK	421	450	470	D03C-2028	RRD 54- 56 Alu with SKK	520	560	600	
D03A-2019	RRD 32-50 galv with SKK	471	500	530	D03C-2029	RRD 54- 63 Alu with SKK	601	630	670	
D03B-2014	RRD 32-28 V2A with SKK	260	280	300	D03C-2030	RRD 54- 71 Alu with SKK	671	710	750	
D03B-2015	RRD 32-31 V2A with SKK	301	315	340	D03C-2031	RRD 54- 80 Alu with SKK	751	800	850	
D03B-2016	RRD 32-35 V2A with SKK	341	355	380	D03C-2032	RRD 54- 90 Alu with SKK	851	900	950	
D03B-2017	RRD 32-40 V2A with SKK	381	400	420	D03C-2033	RRD 54-100 Alu with SKK	951	1000	1060	
D03B-2018	RRD 32-45 V2A with SKK	421	450	470	D03C-2034	RRD 54-112 Alu with SKK	1061	1120	1180	
D03B-2019	RRD 32-50 V2A with SKK	471	500	530	D03C-2035	RRD 54-125 Alu with SKK	1181	1250	1320	
D03C-2014	RRD 32-28 Alu with SKK	260	280	300	D03C-2036	RRD 54-140 Alu with SKK	1321	1400	1500	
D03C-2015	RRD 32-31 Alu with SKK	301	315	340	D03C-2037	RRD 54-160 Alu with SKK	1501	1600	1800	
D03C-2016	RRD 32-35 Alu with SKK	341	355	380						
D03C-2017	RRD 32-40 Alu with SKK	381	400	420	CAUTION: V2A = stainless steel AISI 304.					
D03C-2018	RRD 32-45 Alu with SKK	421	450	470	The RRD access doors made of aluminum are fitted with V2A bolts, nuts and springs.					
D03C-2019	RRD 32-50 Alu with SKK	471	500	530						

ORDER RANGE

(RRD access doors for larger duct Ø available upon request)

RRD Access Doors HT (High Temperature)									
(With ceramic wool gasket and metal knobs for operating temperatures up to +400°C or +752°F)									
Art.No.	Description	for duct-Ø in mm			Art.No.	Description	for duct-Ø in mm		
		min.	Standard	max.			min.	Standard	max.
180 x 80 mm (7 x 3 in)					400 x 300 mm (16 x 12 in)				
D03A-3001	RRD 18- 7 galv HT	68	71	75	D03A-3020	RRD 43-40 galv HT	370	400	420
D03A-3002	RRD 18- 8 galv HT	76	80	85	D03A-3021	RRD 43-45 galv HT	421	450	470
D03A-3003	RRD 18- 9 galv HT	86	90	95	D03A-3022	RRD 43-50 galv HT	471	500	530
D03A-3004	RRD 18-10 galv HT	96	100	105	D03A-3023	RRD 43-56 galv HT	531	560	600
D03A-3005	RRD 18-11 galv HT	106	112	120	D03A-3024	RRD 43-63 galv HT	601	630	670
D03A-3006	RRD 18-12 galv HT	121	125	130	D03A-3025	RRD 43-71 galv HT	671	710	750
D03A-3007	RRD 18-14 galv HT	131	140	150	D03A-3026	RRD 43-80 galv HT	751	800	850
D03A-3008	RRD 18-16 galv HT	151	160	170	D03A-3027	RRD 43-90 galv HT	851	900	950
D03B-3001	RRD 18- 7 V2A HT	68	71	75	D03B-3020	RRD 43-40 V2A HT	370	400	420
D03B-3002	RRD 18- 8 V2A HT	76	80	85	D03B-3021	RRD 43-45 V2A HT	421	450	470
D03B-3003	RRD 18- 9 V2A HT	86	90	95	D03B-3022	RRD 43-50 V2A HT	471	500	530
D03B-3004	RRD 18-10 V2A HT	96	100	105	D03B-3023	RRD 43-56 V2A HT	531	560	600
D03B-3005	RRD 18-11 V2A HT	106	112	120	D03B-3024	RRD 43-63 V2A HT	601	630	670
D03B-3006	RRD 18-12 V2A HT	121	125	130	D03B-3025	RRD 43-71 V2A HT	671	710	750
D03B-3007	RRD 18-14 V2A HT	131	140	150	D03B-3026	RRD 43-80 V2A HT	751	800	850
D03B-3008	RRD 18-16 V2A HT	151	160	170	D03B-3027	RRD 43-90 V2A HT	851	900	950
D03C-3001	RRD 18- 7 Alu HT	68	71	75	D03C-3020	RRD 43-40 Alu HT	370	400	420
D03C-3002	RRD 18- 8 Alu HT	76	80	85	D03C-3021	RRD 43-45 Alu HT	421	450	470
D03C-3003	RRD 18- 9 Alu HT	86	90	95	D03C-3022	RRD 43-50 Alu HT	471	500	530
D03C-3004	RRD 18-10 Alu HT	96	100	105	D03C-3023	RRD 43-56 Alu HT	531	560	600
D03C-3005	RRD 18-11 Alu HT	106	112	120	D03C-3024	RRD 43-63 Alu HT	601	630	670
D03C-3006	RRD 18-12 Alu HT	121	125	130	D03C-3025	RRD 43-71 Alu HT	671	710	750
D03C-3007	RRD 18-14 Alu HT	131	140	150	D03C-3026	RRD 43-80 Alu HT	751	800	850
D03C-3008	RRD 18-16 Alu HT	151	160	170	D03C-3027	RRD 43-90 Alu HT	851	900	950
200 x 100 mm (8 x 4 in)					500 x 400 mm (20 x 16 in)				
D03A-3009	RRD 21-14+15 galv HT	130	140/150	155	D03A-3028	RRD 54- 56 galv HT	520	560	600
D03A-3010	RRD 21-16+18 galv HT	156	160/180	190	D03A-3029	RRD 54- 63 galv HT	601	630	670
D03A-3011	RRD 21-20+22 galv HT	191	200/224	240	D03A-3030	RRD 54- 71 galv HT	671	710	750
D03A-3012	RRD 21-25+28 galv HT	241	250/280	300	D03A-3031	RRD 54- 80 galv HT	751	800	850
D03A-3013	RRD 21-31+35 galv HT	301	315/355	360	D03A-3032	RRD 54- 90 galv HT	851	900	950
D03B-3009	RRD 21-14+15 V2A HT	130	140/150	155	D03A-3033	RRD 54-100 galv HT	951	1000	1060
D03B-3010	RRD 21-16+18 V2A HT	156	160/180	190	D03A-3034	RRD 54-112 galv HT	1061	1120	1180
D03B-3011	RRD 21-20+22 V2A HT	191	200/224	240	D03A-3035	RRD 54-125 galv HT	1181	1250	1320
D03B-3012	RRD 21-25+28 V2A HT	241	250/280	300	D03A-3036	RRD 54-140 galv HT	1321	1400	1500
D03B-3013	RRD 21-31+35 V2A HT	301	315/355	360	D03A-3037	RRD 54-160 galv HT	1501	1600	1800
D03C-3009	RRD 21-14+15 Alu HT	130	140/150	155	D03B-3028	RRD 54- 56 V2A HT	520	560	600
D03C-3010	RRD 21-16+18 Alu HT	156	160/180	190	D03B-3029	RRD 54- 63 V2A HT	601	630	670
D03C-3011	RRD 21-20+22 Alu HT	191	200/224	240	D03B-3030	RRD 54- 71 V2A HT	671	710	750
D03C-3012	RRD 21-25+28 Alu HT	241	250/280	300	D03B-3031	RRD 54- 80 V2A HT	751	800	850
D03C-3013	RRD 21-31+35 Alu HT	301	315/355	360	D03B-3032	RRD 54- 90 V2A HT	851	900	950
300 x 200 mm (12 x 8 in)					D03B-3033 RRD 54-100 V2A HT 951 1000 1060				
D03A-3014	RRD 32-28 galv HT	260	280	300	D03B-3034	RRD 54-112 V2A HT	1061	1120	1180
D03A-3015	RRD 32-31 galv HT	301	315	340	D03B-3035	RRD 54-125 V2A HT	1181	1250	1320
D03A-3016	RRD 32-35 galv HT	341	355	380	D03B-3036	RRD 54-140 V2A HT	1321	1400	1500
D03A-3017	RRD 32-40 galv HT	381	400	420	D03B-3037	RRD 54-160 V2A HT	1501	1600	1800
D03A-3018	RRD 32-45 galv HT	421	450	470	D03C-3028	RRD 54- 56 Alu HT	520	560	600
D03A-3019	RRD 32-50 galv HT	471	500	530	D03C-3029	RRD 54- 63 Alu HT	601	630	670
D03B-3014	RRD 32-28 V2A HT	260	280	300	D03C-3030	RRD 54- 71 Alu HT	671	710	750
D03B-3015	RRD 32-31 V2A HT	301	315	340	D03C-3031	RRD 54- 80 Alu HT	751	800	850
D03B-3016	RRD 32-35 V2A HT	341	355	380	D03C-3032	RRD 54- 90 Alu HT	851	900	950
D03B-3017	RRD 32-40 V2A HT	381	400	420	D03C-3033	RRD 54-100 Alu HT	951	1000	1060
D03B-3018	RRD 32-45 V2A HT	421	450	470	D03C-3034	RRD 54-112 Alu HT	1061	1120	1180
D03B-3019	RRD 32-50 V2A HT	471	500	530	D03C-3035	RRD 54-125 Alu HT	1181	1250	1320
D03C-3014	RRD 32-28 Alu HT	260	280	300	D03C-3036	RRD 54-140 Alu HT	1321	1400	1500
D03C-3015	RRD 32-31 Alu HT	301	315	340	D03C-3037	RRD 54-160 Alu HT	1501	1600	1800
D03C-3016	RRD 32-35 Alu HT	341	355	380					
D03C-3017	RRD 32-40 Alu HT	381	400	420					
D03C-3018	RRD 32-45 Alu HT	421	450	470					
D03C-3019	RRD 32-50 Alu HT	471	500	530					
					CAUTION: V2A = stainless steel AISI 304.				
					The RRD access doors made of aluminum are fitted with V2A bolts, nuts and springs.				